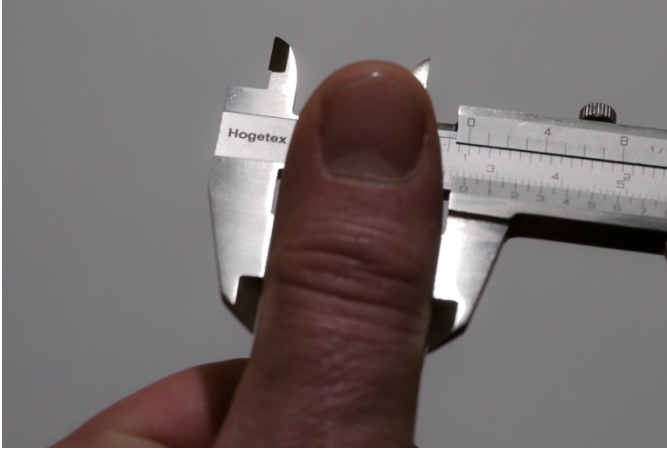


Measurement Guide for Ottoman Thumbriings

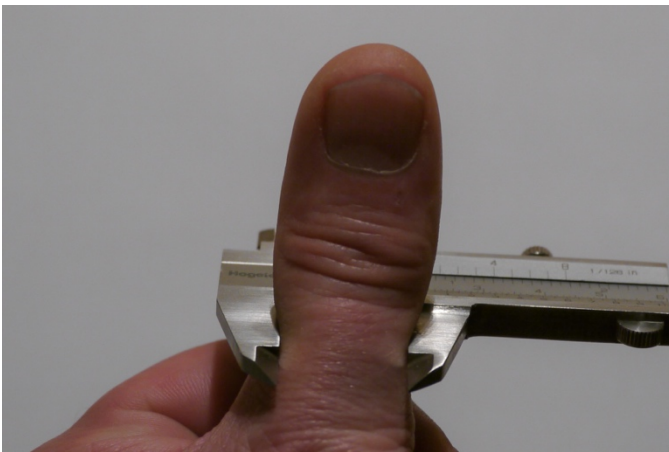
3 steps are required to determine the correct ring size:

1. Taking measurement
 2. Preparing a 1:1 model
 3. Check and correct if necessary
-

Step 1: Taking measurement



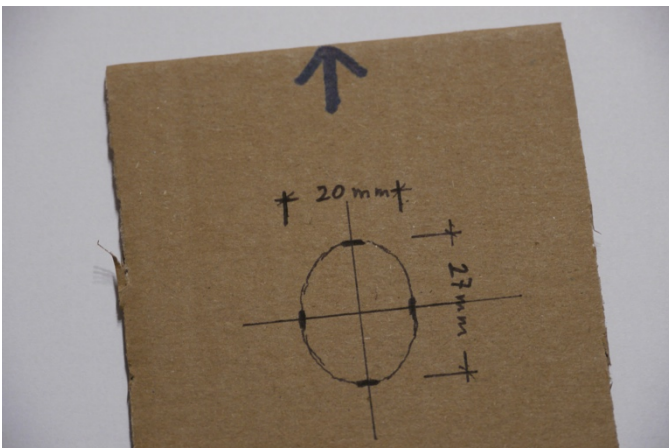
The width of the thumb joint is measured with a sliding calliper without exerting pressure on the joint.



The measure at the narrowest point between the joint and thumb root is measured while applying gentle pressure. The skin should be pressed in 1-2mm on both sides. This ensures a tight fit of the ring and prevents movement

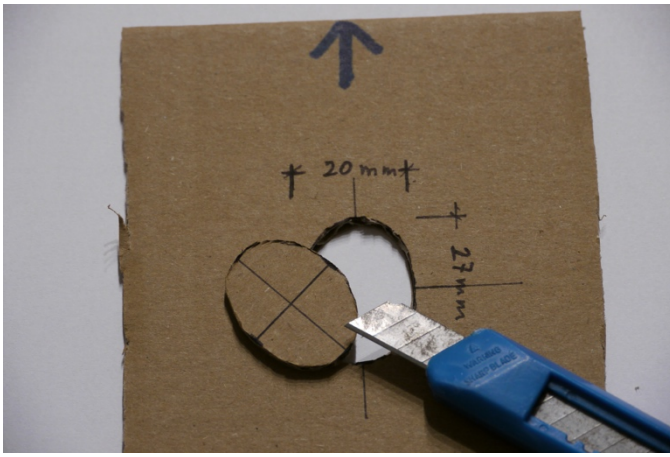
Alternatively, if no sliding calliper is available, the thumb may be placed on a sheet of paper without exerting pressure and outlined with a fine-tipped pen. Make sure to guide the pen very tightly around your thumb at the narrowest point between the joint and the root. Then measure the widest and narrowest distance.

Step 2: Taking measurement



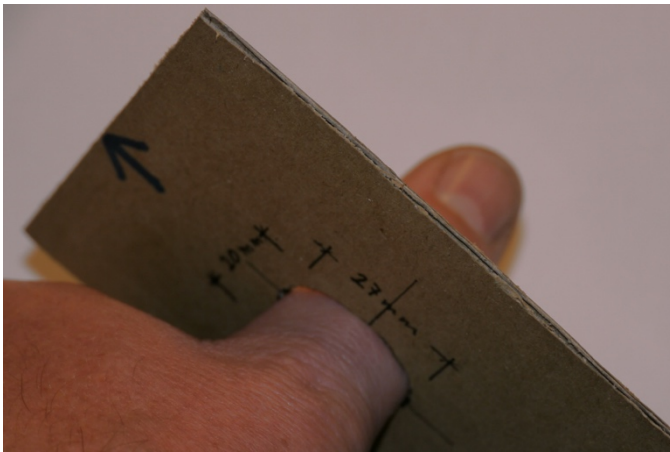
Now transfer the two dimensions onto a thick piece of cardboard. The example on the left shows a previously measured joint width of 27mm, 20mm at the narrowest point.

The arrow marks the front of the ring for better illustration.



After the points have been connected in an oval shape, the shape is cut with a sharp knife and the edges are smoothed with sandpaper if necessary.

Step 3: Check and correct if necessary



You should be able to push the size model just above the thumb joint without any pressure. This will only work by turning the front part with the arrow to the left or right by a quarter turn.

Only behind the joint, the mould is rotated into position (arrow pointing up) and thus "locked". This is also called "bayonet connection" and causes the ring to sit firmly behind the joint so that it cannot be pulled from the thumb. By taking the precise measurements first, the ring sits tightly behind the joint.



In general, the first measure taken should be correct. However, if there are variations and the model is too tight or too loose, the size of the model must be adjusted by sanding or recutting. The only thing left to do is to take the two current measurements from the model.

Have fun and success in taking the measurements for your Ottoman thumbing!



Martin
&
Stephan

